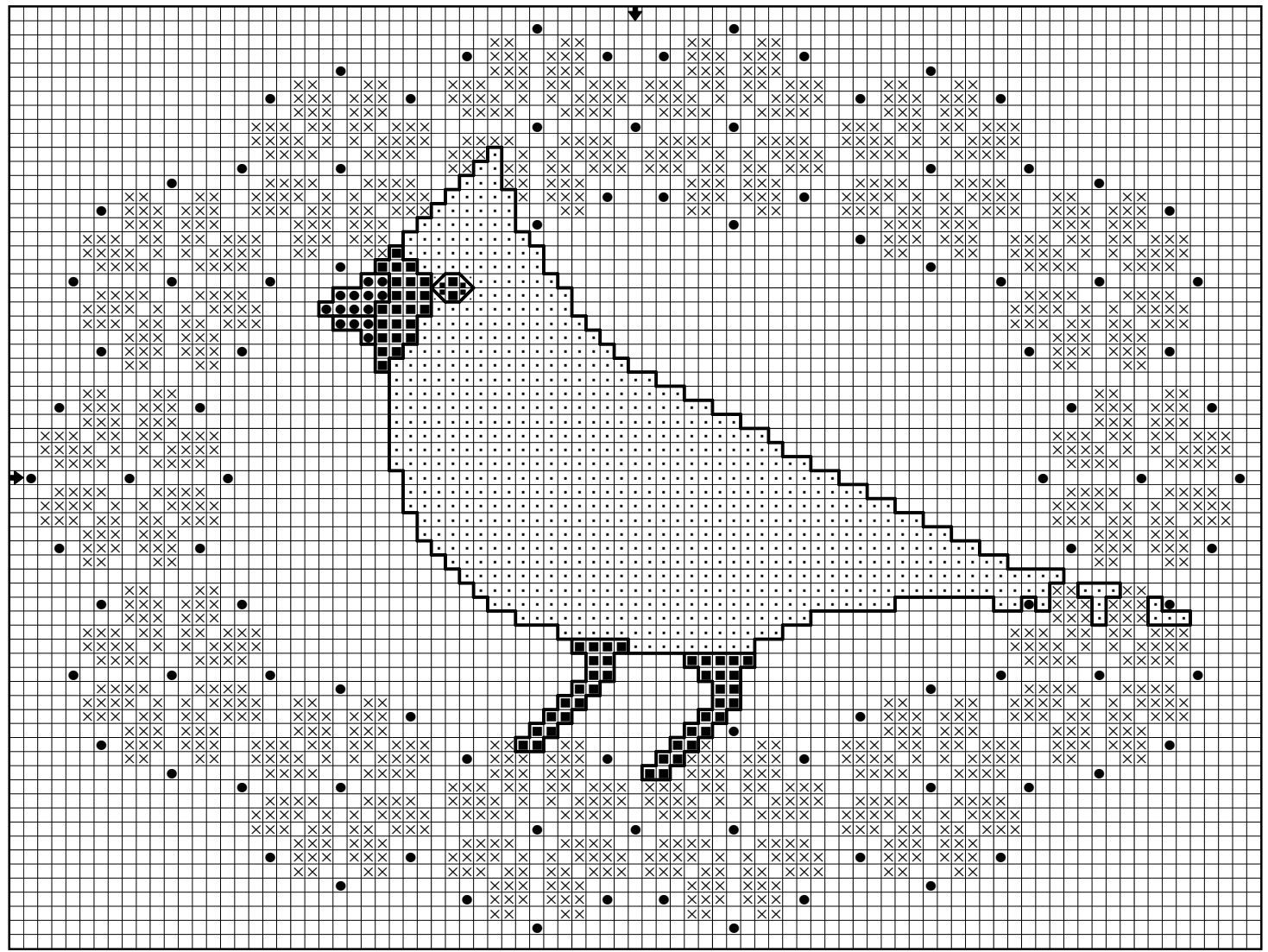


“Winter 2014”
designed by Mari McDonald

Stitched (2 over 2) on 28 ct. ‘Sterling’ lugana from Picture This Plus.
Stitched area is approximately 6 1/4” w x 4 3/4” h. Stitch count is 89 w x 67 h.

Stitching instructions and designer’s notes:

2 strands of floss were used for all full and quarter stitches.
1 strand of #4 braid was used for all full stitches.
Backstitch solid line with 1 strand of ThreadworX #10371 (or equivalent).
The thread conversions listed are the closest approximate to the thread used on the cover model.



ThreadworX		DMC
×	# 1048 Woodland Green	986
.	# 1089 Bleeding Hearts	815
■	# 10371 Rich Chocolate	3371
Kreinik #4 braids		
●	# 202 HL Aztec Gold High Lustre	

This design is courtesy of Whispered by the Wind, LLC.
copyright © 2014 Whispered by the Wind, LLC. All rights reserved.
This chart may not be kitted or sold. It may not be reproduced electronically or for any other purpose than counted cross stitch.
You may make copies of this chart for your friends to stitch and enjoy.