



“Winter 2013”  
designed by Mari McDonald

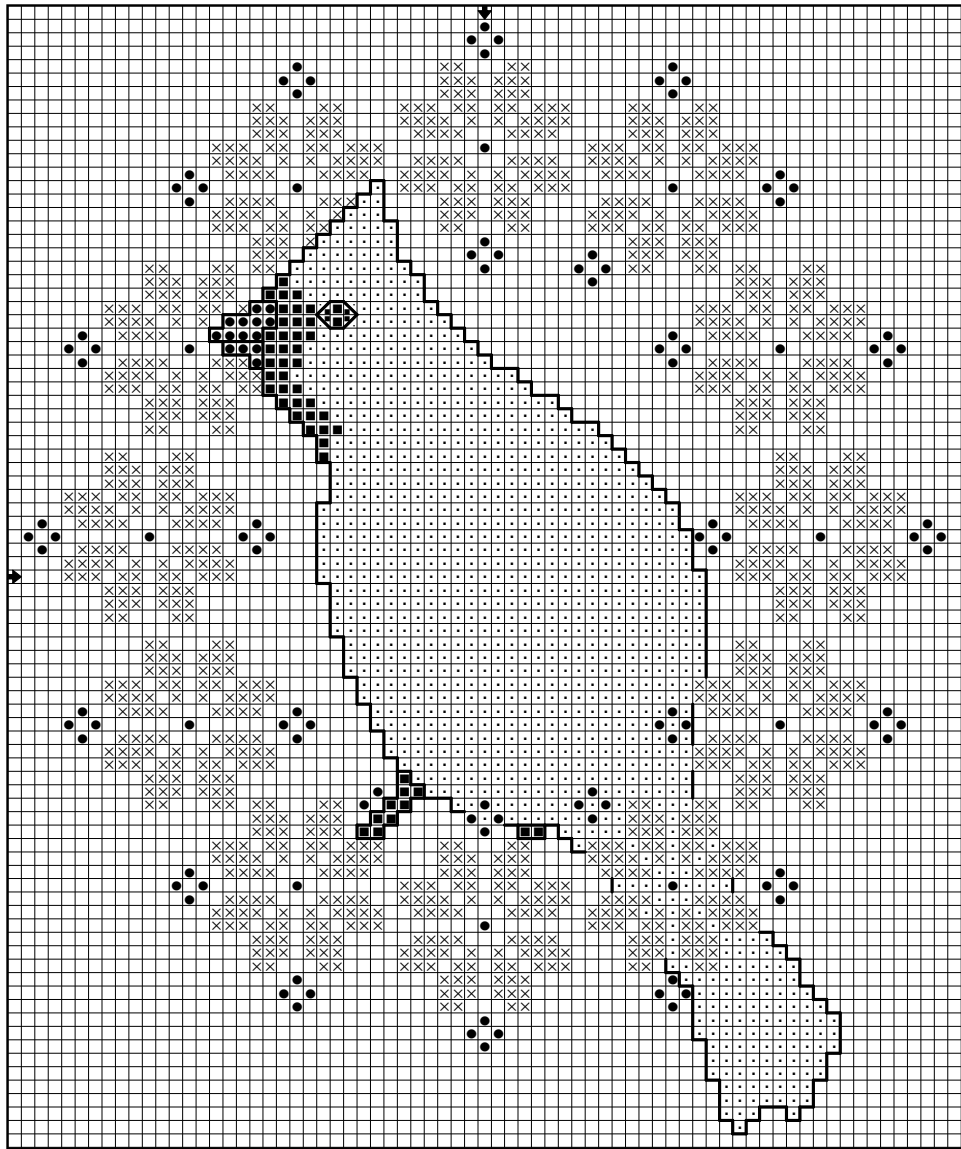
Stitched (2 over 2) on 28 ct. ‘Dwarf’ lugana from Picture This Plus.  
Stitched area is approximately 5” w x 6” h. Stitch count is 69 w x 83 h.

ThreadworX		DMC
×	# 1048 Woodland Green	986
.	# 1089 Bleeding Hearts	815
■	# 10371 Rich Chocolate	3371
Kreinek #4 braids		
●	# 202 HL Aztec Gold High Lustre	



**Stitching instructions and designer’s notes:**

- 2 strands of floss were used for all full and quarter stitches.
- 1 strand of #4 braid was used for all full stitches.
- Backstitch solid line with 1 strand of ThreadworX #10371 (or equivalent).
- The thread conversions listed are the closest approximate to the thread used on the cover model.



This design is courtesy of Whispered by the Wind, LLC.  
copyright © 2013 Whispered by the Wind, LLC. All rights reserved.  
This chart may not be kitted or sold. It may not be reproduced electronically or for any other purpose than counted cross stitch.  
You may make copies of this chart for your friends to stitch and enjoy.