

'Swirly Snow'

by Mari McDonald

As shown this design was stitched with DMC B5200.

Challenge your creativity and imagination by using different fabric and thread types, colors or beads for the individual snowflakes.

On 14 / 28 ct. fabric your finished piece will fit in a standard 5" x 7" frame.

Stitching instructions:

Stitched (2 over 2) on 14 / 28 ct. Navy Jobelan.

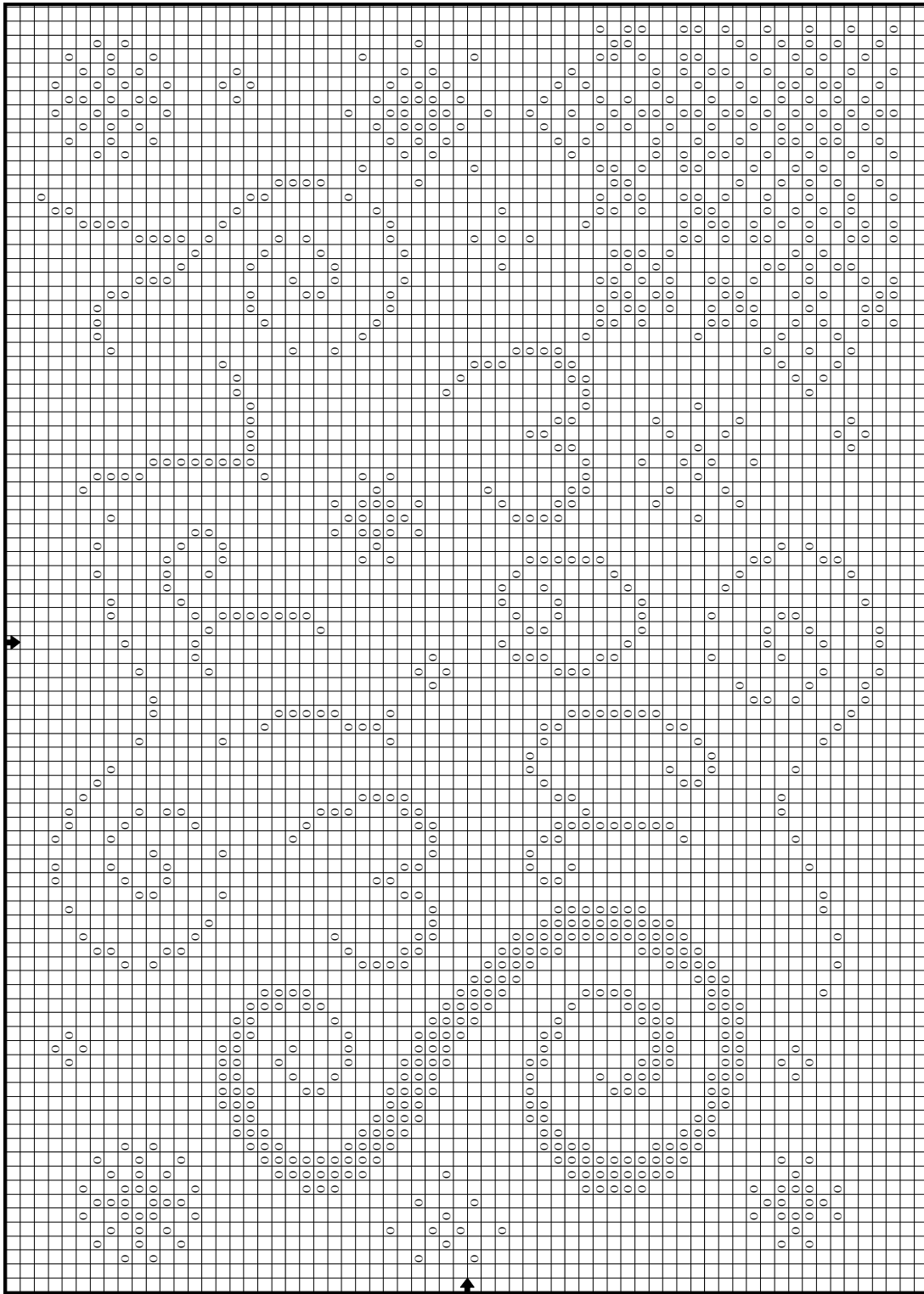
Stitch count is 89 w x 62 h.

This design is courtesy of Whispered by the Wind, LLC.

'Swirly Snow' copyright © 2007 Whispered by the Wind, LLC.

All rights reserved.

This chart may not be kitted or sold. It may not be reproduced electronically or for any other purpose than counted cross stitch. You may make copies of this chart for your friends to stitch and enjoy.



P.O. Box 1596
Petersburg, VA 23805
www.whisperedbythewind.com

