

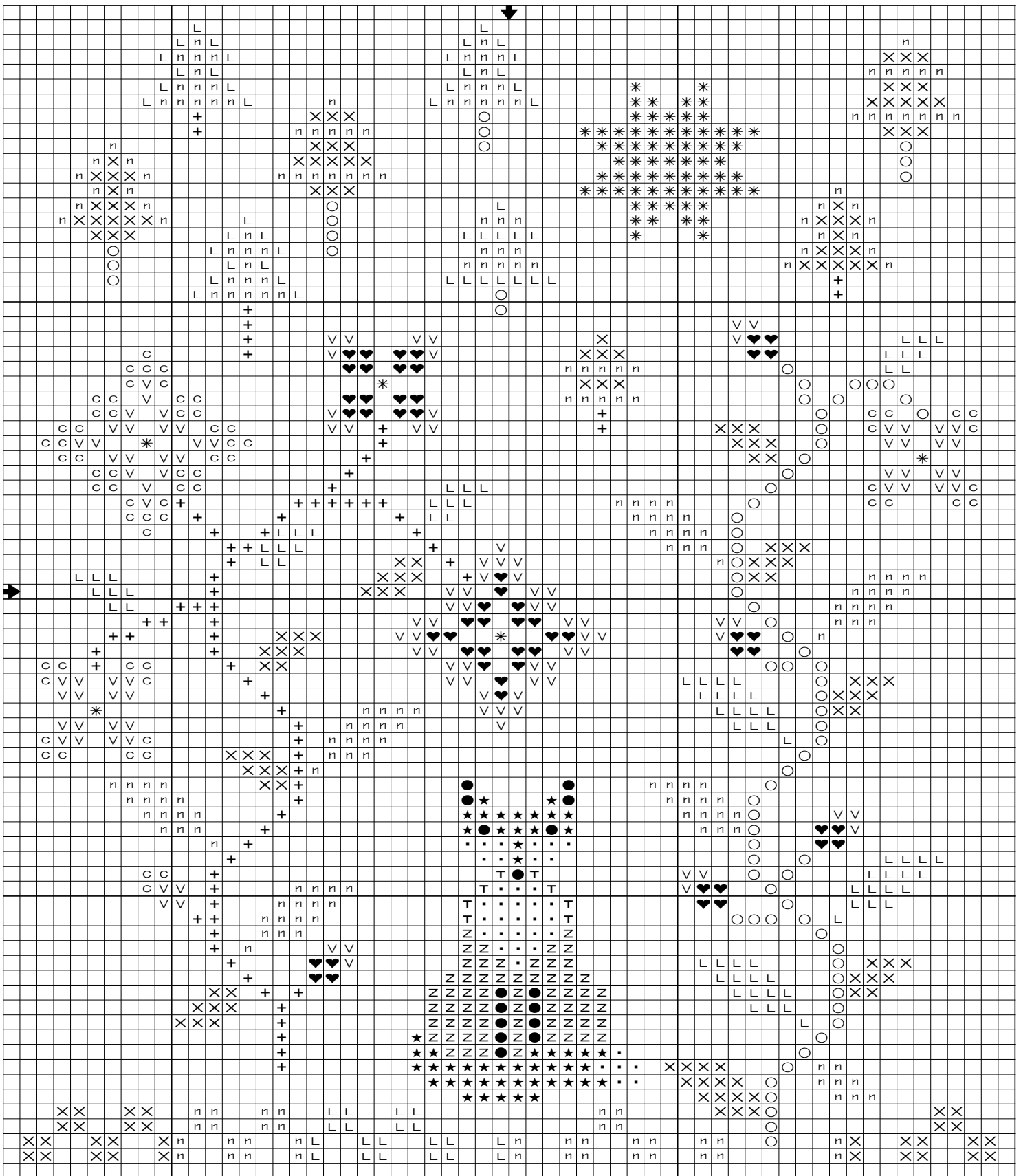
Front cover model was stitched (2 over 2) on 28 ct. ‘Oaken’ cashel linen from Picture This Plus.  
Stitched with DMC thread.  
Stitched area is approximately 4 1/8” w x 5 1/2” h. Stitch count is 58 w x 77 h.

DMC colors							
c	30	☆	400	X	3011	●	3371
v	31	○	610	n	3012	◐	3721
♥	32	+	611	L	3013	τ	3776
Z	301	*	745	■	3051	•	blanc



This design is courtesy of Whispered by the Wind, LLC.  
copyright © 2022 Whispered by the Wind, LLC. All rights reserved.  
This chart may not be kitted or sold. It may not be reproduced electronically or for any other purpose than counted cross stitch.  
You may make copies of this chart for your friends to stitch and enjoy.  
Whispered by the Wind, LLC P.O. Box 1596 Petersburg, VA 23805  
[www.whisperedbythewind.com](http://www.whisperedbythewind.com)

Finnegan's Flowers



This design is courtesy of Whispered by the Wind, LLC.  
 copyright © 2022 Whispered by the Wind, LLC. All rights reserved.  
 This chart may not be kitted or sold. It may not be reproduced electronically or for any other purpose than counted cross stitch.  
 You may make copies of this chart for your friends to stitch and enjoy.  
 Whispered by the Wind, LLC P.O. Box 1596 Petersburg, VA 23805  
 www.whisperedbythewind.com